

# Ringo - R Investigation of NimbleGen Oligoarrays

Joern Toedling

## 1 Introduction

The package *Ringo* deals with the analysis of two-color oligonucleotide microarrays used in ChIP-chip projects. The package was started to facilitate the analysis of two-color microarrays from the company NimbleGen<sup>1</sup>, but the package has a modular design, such that the platform-specific functionality is encapsulated and analogous two-color tiling array platforms can also be processed. The package employs functions from other packages of the Bioconductor project (Gentleman et al., 2004) and provides additional ChIP-chip-specific and NimbleGen-specific functionalities.

```
> library("Ringo")
```

If you use Ringo for analyzing your data, please cite:

- Joern Toedling, Oleg Sklyar, Tammo Krueger, Jenny J Fischer, Silke Sperling, Wolfgang Huber (2007). Ringo - an R/Bioconductor package for analyzing ChIP-chip readouts. *BMC Bioinformatics*, 8:221.

## Getting help

If possible, please send questions about *Ringo* to the Bioconductor mailing list.

See <http://www.bioconductor.org/docs/mailList.html>

Their archive of questions and responses may prove helpful, too.

## 2 Reading in the raw data

For each microarray, the scanning output consists of two files, one holding the Cy3 intensities, the other one the Cy5 intensities. These files are tab-delimited text files.

The package comes with (shortened) example scanner output files, in NimbleGen's *pair* format. These files are excerpts of the ChIP-chip demo data that NimbleGen provide at their FTP site for free download. Their biological context, identification of DNA binding sites of complexes containing Suz12 in human cells, has been described before (Squazzo et al., 2006).

---

<sup>1</sup>for NimbleGen one-color microarrays, we recommend the Bioconductor package *oligo*

```
> exDir <- system.file("exData",package="Ringo")
> list.files(exDir, pattern="pair.txt")

[1] "MOD_20551_PMT1_pair.txt" "MOD_20742_PMT1_pair.txt"

> head(read.delim(file.path(exDir,"MOD_20551_PMT1_pair.txt"),
+                 skip=1))[,c(1,4:7,9)]
```

```
      IMAGE_ID      PROBE_ID POSITION   X   Y     PM
1 20551_PMT1 SUZ100P0000021781     1 269  78 1149.33
2 20551_PMT1 SUZ100P0000021783    16 682 779 1192.00
3 20551_PMT1 SUZ100P0000021785    31  92 405  685.56
4 20551_PMT1 SUZ100P0000021787    46 219 608  562.67
5 20551_PMT1 SUZ100P0000021789    61 217 418  584.56
6 20551_PMT1 SUZ100P0000021791    76 147 406  636.22
```

In addition, there is a text file that holds details on the samples, including which two *pair* files belong to which sample<sup>2</sup>.

```
> read.delim(file.path(exDir,"example_targets.txt"), header=TRUE)

SlideNumber      FileNameCy3      FileNameCy5
1      Suz12 MOD_20551_PMT1_pair.txt MOD_20742_PMT1_pair.txt
      Species  Cy3  Cy5
1 Homo sapiens (human) total Suz12
```

The columns `FileNameCy3` and `FileNameCy5` hold which of the raw data files belong to which sample. The immuno-precipitated extract was colored with the Cy5 dye in the experiment, so the column `Cy5` essentially holds which antibody has been used for the immuno-precipitation, in this case one against the protein `Suz12`.

Furthermore, there is a file describing the reporter categories on the array (you might know these Spot Types files from *limma* (Smyth, 2005)).

```
> read.delim(file.path(exDir,"spottypes.txt"), header=TRUE)

SpotType GENE_EXPR_OPTION PROBE_ID Color
1  Probe          FORWARD*      * black
2  Probe          REVERSE*      * black
3  Probe          BLOCK*        * black
4 Negative  NGS_CONTROLS*      * yellow
5  Empty          EMPTY          * white
6  H_Code         H_CODE          * red
7  V_Code         V_CODE          * blue
8  Random         RANDOM          * green
```

---

<sup>2</sup>You may have to construct such a targets file for your own data. The `scripts` directory of this package contains a script `convertSampleKeyTxt.R` as an inspiration how the file `SampleKey.txt` provided by NimbleGen could be used for this.

Reading all these files, we can read in the raw reporter intensities and obtain an object of class *RGList*, a class defined in package *limma*.

```
> exRG <- readNimblegen("example_targets.txt", "spottypes.txt", path=exDir)
```

This object is essentially a list and contains the raw intensities of the two hybridizations for the red and green channel plus information on the reporters on the array and on the analyzed samples.

```
> head(exRG$R)
```

```

      MOD_20742_PMT1_pair
[1,]                613.22
[2,]                841.67
[3,]                659.56
[4,]                494.44
[5,]                469.33
[6,]                544.11
```

```
> head(exRG$G)
```

```

      MOD_20551_PMT1_pair
[1,]                1149.33
[2,]                1192.00
[3,]                685.56
[4,]                562.67
[5,]                584.56
[6,]                636.22
```

```
> head(exRG$genes)
```

	GENE_EXPR_OPTION	PROBE_ID	POSITION	X	Y	Status	ID
1	FORWARD1	SUZ100P0000021781		1	269	78	Probe SUZ100P0000021781
2	FORWARD1	SUZ100P0000021783		16	682	779	Probe SUZ100P0000021783
3	FORWARD1	SUZ100P0000021785		31	92	405	Probe SUZ100P0000021785
4	FORWARD1	SUZ100P0000021787		46	219	608	Probe SUZ100P0000021787
5	FORWARD1	SUZ100P0000021789		61	217	418	Probe SUZ100P0000021789
6	FORWARD1	SUZ100P0000021791		76	147	406	Probe SUZ100P0000021791

```
> exRG$targets
```

	SlideNumber	FileNameCy3	FileNameCy5
1	Suz12	MOD_20551_PMT1_pair.txt	MOD_20742_PMT1_pair.txt
		Species	Cy3 Cy5
1	Homo sapiens (human)	total	Suz12

Users can alternatively supply raw two-color ChIP-chip readouts from other platforms in *RGList* format and consecutively use *Ringo* to analyze that data. See Section 9 for an example.

### 3 Mapping reporters to genomic coordinates

By *reporters*, we mean the oligo-nucleotides or PCR products that have been fixated on the array for measuring the abundance of corresponding genomic fragments in the ChIP-chip experiment.

Each reporter has a unique identifier and (ideally) a unique sequence, but can, and probably does, appear in multiple copies as *features* on the array surface.

A mapping of reporters to genomic coordinates is usually provided by the array manufacturer, such as in NimbleGen's \*.POS files. If the reporter sequences are provided as well, you may consider to perform a custom mapping of these sequences to the genome of interest, using alignment tools such as *Exonerate* (Slater and Birney, 2005) or functions provided by the Bioconductor package *Biostrings* (Pages et al., 2008).

Such a re-mapping of reporters to the genome can sometimes be necessary, for example when the array has designed on an outdated assembly of the genome. Re-mapping also provides the advantage that you can allow non-perfect matches of reporters to the genome, if desired.

Once reporters have been mapped to the genome, this mapping needs to be made available to the data analysis functions. While a *data.frame* may be an obvious way of representing such a mapping, repeatedly extracting sub-sets of the data frame related to a genomic region of interest turns out to be too slow for practical purposes. *Ringo*, similar to the Bioconductor package *tilingArray*, employs an object of class *probeAnno* to store the mapping between reporters on the microarray and genomic positions. Per chromosome, the object holds four vectors of equal length and ordering that specify at which genomic positions reporter matches start and end, what identifiers or indices these reporters have in the intensities data, and whether these reporters match uniquely to the genomic positions.

```
> load(file.path(exDir, "exampleProbeAnno.rda"))
> ls(exProbeAnno)
```

```
[1] "9.end"      "9.index"    "9.start"    "9.unique"
```

```
> show(exProbeAnno)
```

```
A 'probeAnno' object holding the mapping between
reporters and genomic positions.
```

```
Chromosomes: 9
```

```
Microarray platform: NimbleGen MOD_2003-12-05_SUZ12_1in2
```

```
Genome: H.sapiens (hg18)
```

```
> head(exProbeAnno["9.start"])
```

```
[1] 531857 861532 1269645 2497214 2685042 3795381
```

```
> head(exProbeAnno["9.end"])
```

```
[1] 531916 861591 1269704 2497273 2685101 3795440
```

The function `posToProbeAnno` allows generation of a valid *probeAnno* object, either from a file that corresponds to a NimbleGen POS file or from a *data.frame* objects that holds the same information. The package's `scripts` directory contains a script `mapReportersWith-Biostrings.R`, which shows how to use *Biostrings* for mapping the reporter sequences of the provided example data, and some Perl scripts that allow the conversion of multiple output files from common alignment tools such as Exonerate into one file that corresponds to a POS file. The function `validObject` can be used to perform a quick check whether a generated *probeAnno* object will probably work with other *Ringo* functions.

## 4 Quality assessment

The `image` function allows us to look at the spatial distribution of the intensities on a chip. This can be useful to detect obvious artifacts on the array, such as scratches, bright spots, finger prints etc. that might render parts or all of the readouts useless.

```
> par(mar=c(0.01,0.01,0.01,0.01), bg="black")
> image(exRG, 1, channel="green", mycols=c("black","green4","springgreen"))
```

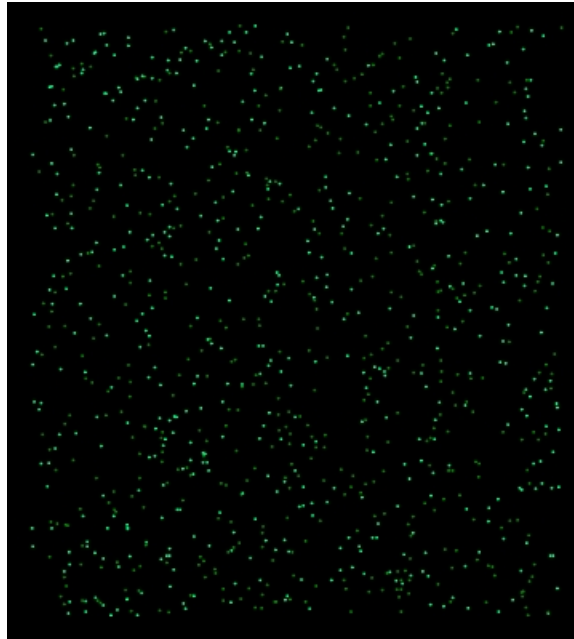
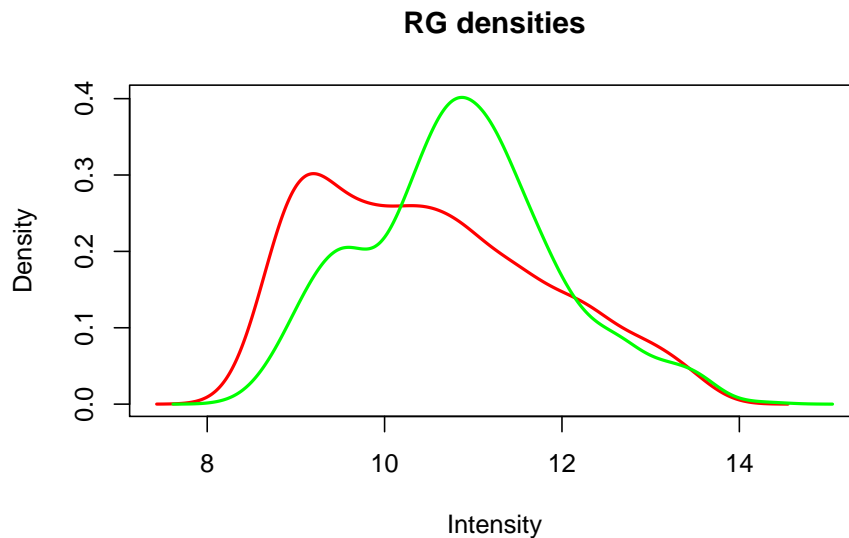


Figure 1: *Spatial distribution of raw reporter intensities laid out by the reporter position on the microarray surface.*

See figure 1 for the image. Since the provided example data set only holds the intensities for reporters mapped to the forward strand of chromosome 9, the image only shows the few green dots of these reporters' positions. We see, however, that these chromosome 9 reporters are well distributed over the whole array surface rather than being clustered together in one part of the array.

It may also be useful to look at the absolute distribution of the single-channel densities. *limma*'s function `plotDensities` may be useful for this purpose.

```
> plotDensities(exRG)
```



In addition, the data file loaded above also contains a *GFF* (*General Feature Format*) file of all transcripts on human chromosome 9 annotated in the [Ensembl](#) database (release 46, August 2007). The script `retrieveGenomicFeatureAnnotation.R` in the package's scripts directory contains example source code showing how the Bioconductor package *biomaRt* can be used to generate such an annotated genome features *data.frame*.

```
> head(exGFF[,c("name", "symbol", "chr", "strand", "start", "end")])
```

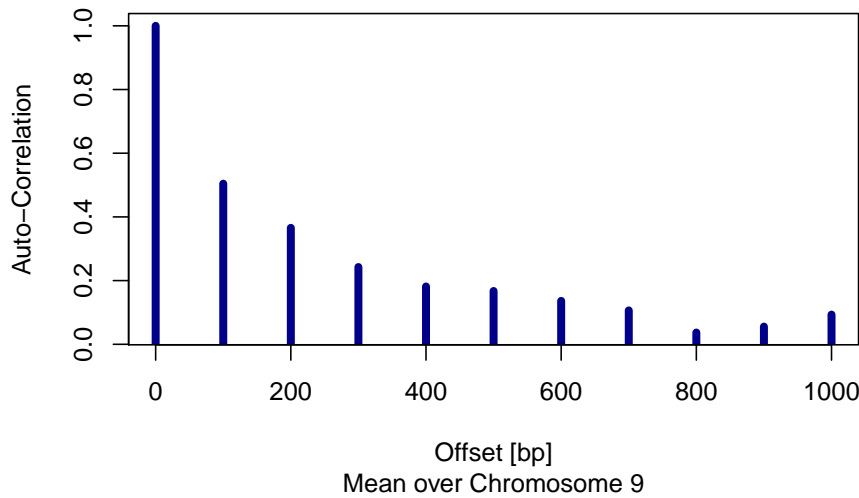
	name	symbol	chr	strand	start	end
1	ENST00000382507		9	1	1056	1620
2	ENST00000326592		9	-1	5841	19587
3	ENST00000382502		9	-1	24394	25841
4	ENST00000355822		9	-1	24921	25277
5	ENST00000382501		9	-1	25028	25856
6	ENST00000382500	FOXD4	9	-1	105991	108951

To assess the impact of the small distance between reporters on the data, one can look at the autocorrelation plot. For each base-pair lag  $d$ , it is assessed how strong the intensities of reporters at genomic positions  $x + d$  are correlated with the probe intensities at positions  $x$ .

The computed correlation is plotted against the lag  $d$ .

```
> exAc <- autocor(exRG, probeAnno=exProbeAnno, chrom="9", lag.max=1000)
> plot(exAc)
```

## ChIP: Autocorrelation of Intensities



We see some auto-correlation between probe position up to 800 base pairs apart. Since the sonicated fragments that are hybridized to the array have an average size in the range of up to 1000 bp, such a degree of auto-correlation up to this distance can be expected.

## 5 Preprocessing

Following quality assessment of the raw data, we perform normalization of the probe intensities and derive fold changes of reporters' intensities in the enriched sample divided by their intensities in the non-enriched *input* sample and take the (generalized) logarithm of these ratios.

We use the variance-stabilizing normalization ([Huber et al., 2002](#)) on probe intensities and generate an `ExpressionSet` object of the normalized probe levels.

```
> exampleX <- preprocess(exRG)
> sampleNames(exampleX) <-
+ with(exRG$targets, paste(Cy5, "vs", Cy3, sep="_"))
> print(exampleX)
```

```
ExpressionSet (storageMode: lockedEnvironment)
assayData: 991 features, 1 samples
  element names: exprs
phenoData
  sampleNames: Suz12_vs_total
  varLabels and varMetadata description:
  SlideNumber: NA
  FileNameCy3: NA
  ...: ...
  Cy5: NA
  (6 total)
additional varMetadata: varLabel
```

```

featureData
  featureNames: SUZ100P0000021781, SUZ100P0000021783, ..., SUZ100P0000058079 (991 total)
  fvarLabels and fvarMetadata description: none
experimentData: use 'experimentData(object)'
Annotation:

```

Among the provided alternative preprocessing options is also the Tukey-biweight scaling procedure that NimbleGen have used to scale ChIP-chip readouts so that the data is centered on zero.

```

> exampleX.NG <- preprocess(exRG, method="nimblegen")
> sampleNames(exampleX.NG) <- sampleNames(exampleX)

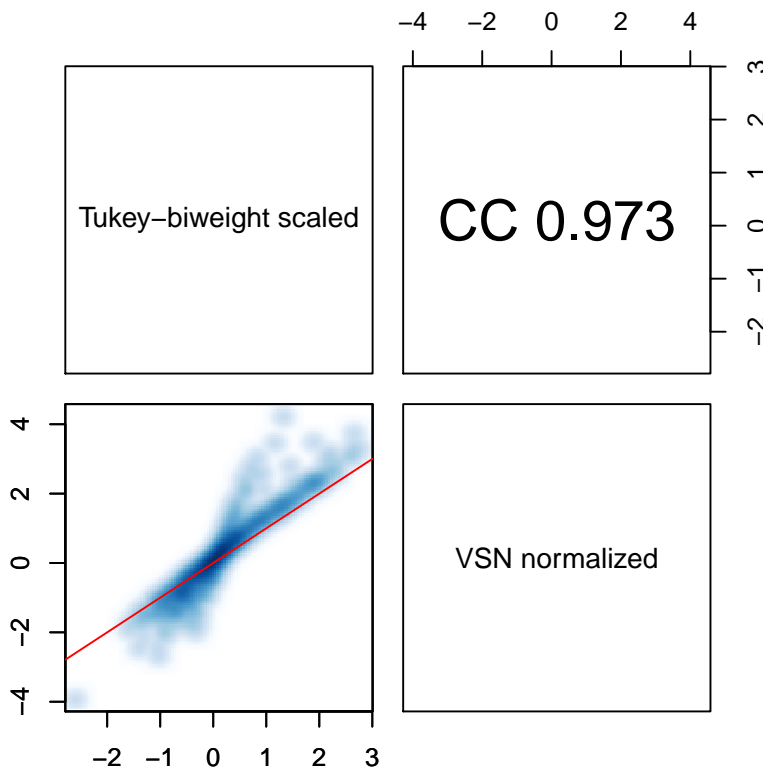
```

The effects of different preprocessing procedures on the data, can be assessed using the `corPlot` function.

```

> corPlot(cbind(exprs(exampleX), exprs(exampleX.NG)),
+         grouping=c("VSN normalized", "Tukey-biweight scaled"))

```



The same function can also be used to assess the correlation between biological and technical replicates among the microarray samples.



## 6 Visualize intensities along the chromosome

```
> chipAlongChrom(exampleX, chrom="9", xlim=c(34318000,34321000),  
+               ylim=c(-2,4), probeAnno=exProbeAnno, gff=exGFF)
```

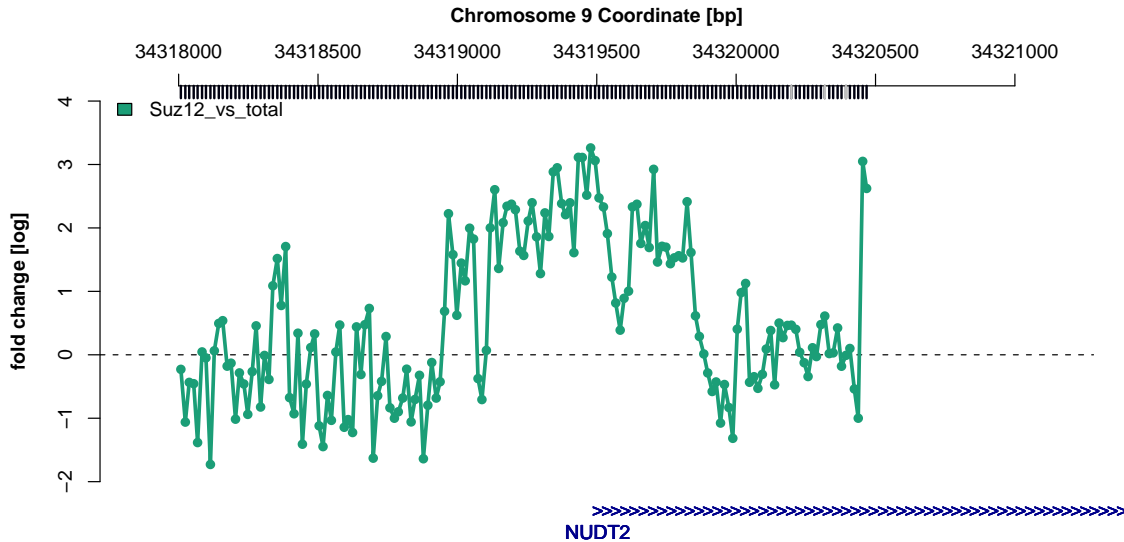


Figure 2: Normalized probe intensities around the TSS of the *Nudt2* gene.

See the result in figure 2.

## 7 Smoothing of probe intensities

Since the response of reporters to the same amount of hybridized genome material varies greatly, due to probe GC content, melting temperature, secondary structure etc., it is suggested to do a smoothing over individual probe intensities before looking for ChIP-enriched regions.

Here, we slide a window of 800 bp width along the chromosome and replace the intensity at a genomic position  $x_0$  by the median over the intensities of those reporters inside the window that is centered at  $x_0$ .

```
> smoothX <- computeRunningMedians(exampleX, probeAnno=exProbeAnno,  
+ modColumn = "Cy5", allChr = "9", winHalfSize = 400)  
> sampleNames(smoothX) <- paste(sampleNames(exampleX), "smoothed")  
  
> chipAlongChrom(exampleX, chrom="9", xlim=c(34318000,34321000),  
+               ylim=c(-2,4), probeAnno=exProbeAnno, gff=exGFF)  
> chipAlongChrom(smoothX, chrom="9", xlim=c(34318000,34321000),  
+               probeAnno=exProbeAnno, itype="l", ilwd=4,  
+               paletteName="Spectral", add=TRUE)
```

See the smoothed probe levels in figure 3.

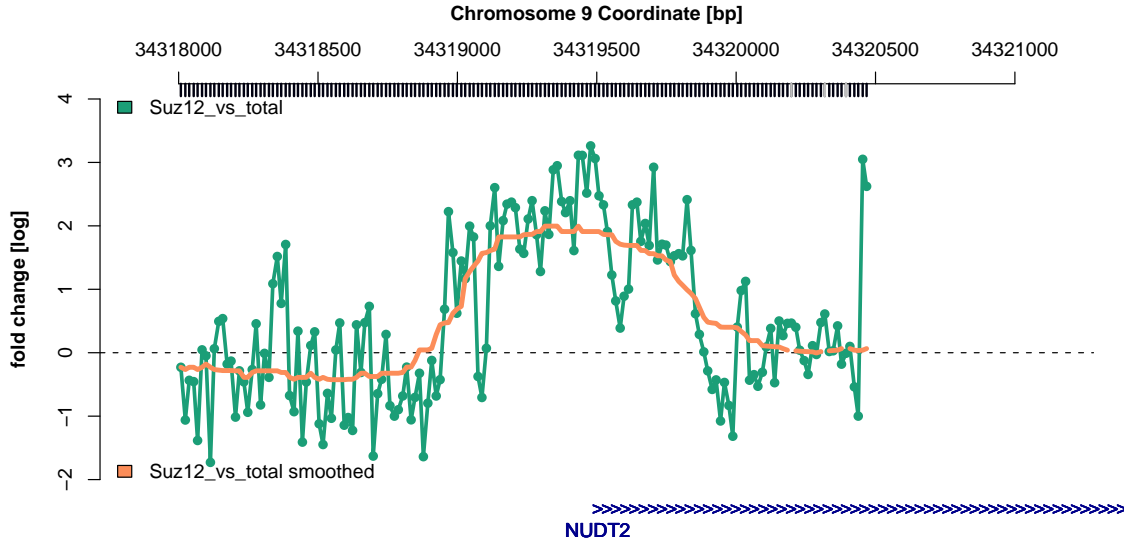


Figure 3: *Normalized and smoothed probe intensities around the TSS of the *Nudt2* gene.*

## 8 Finding ChIP-enriched regions

To identify antibody-enriched genomic regions, we require the following:

- smoothed intensities of reporters mapped to this region exceed a certain threshold  $y_0$
- the region contains at least three probe match positions
- each affected position is less than a defined maximum distance  $d_{max}$  apart from another affected position in the region (we require a certain probe spacing to have confidence in detected peaks<sup>3</sup>)

For setting the threshold  $y_0$ , one has to assess the expected (smoothed) probe levels in non-enriched genomic regions, i.e. the *null distribution* of probe levels. In a perfect world, we could use a log ratio of 0 as definite cut-off. In this case the “enriched” DNA and the input DNA sample would be present in equal amounts, so no antibody-bound epitope, could be found at this genomic site. In practice, there are some reasons why zero may be a too naive cut-off for calling a probe-hit genomic site *enriched* in our case. See Bourgon (2006) for an extensive discussion on problematic issues with ChIP-chip experiments. We will just briefly mention a few issues here. For once, during the immuno-precipitation, some non-antibody-bound regions may be pulled down in the assay and consequently enriched or some enriched DNA may cross-hybridize to other reporters. Furthermore, since genomic fragments after sonication are mostly a lot larger than the genomic distance between two probe-matched genomic positions, auto-correlation between reporters certainly is existent. Importantly, different reporters measure the same DNA amount with a different efficiency even after normalizing the probe levels, due to sequence properties of the probe, varying

<sup>3</sup>Note that the term “peak”, while commonly used in ChIP-chip context, is slightly misleading and the term “ChIP-enriched region”, or “cher” in shorthand, is more appropriate. Within such regions the actual signal could show two or more actual signal peaks or none at all (long plateau).

quality of the synthesis of reporters on the array and other reasons. To ameliorate this fact, we employ the sliding-window smoothing approach.

The aforementioned issues make it difficult to come up with a reasonable estimate for the null distribution of smoothed probe levels in non-enriched genomic regions. See Figure 4 for the two histograms. We present one way (out of many) for objectively choosing the threshold  $y_0$ . The histograms suggest the smoothed reporter levels follow a mixture of two distributions, one being the null distribution of non-affected reporters and the other one the alternative one for the smoothed reporter values in ChIP-enriched regions. We assume the null distribution is symmetric and its mode is the one close to zero in the histogram. By mirroring its part left of the mode over the mode, we end up with an estimated null distribution. For the alternative distribution, we only assume that it is stochastically larger than the null distribution and that its mass to the left of the estimated mode of the null distribution is negligible. We estimate an upper bound  $y_0$  for values arising from the null distribution and conclude that smoothed probe levels  $y > y_0$  are more likely to arise from the ChIP enrichment distribution than from the null distribution. These estimates are indicated by red vertical lines in the histograms.

```
> (y0 <- apply(exprs(smoothX),2,upperBoundNull))
```

```
Suz12_vs_total smoothed
0.7392157
```

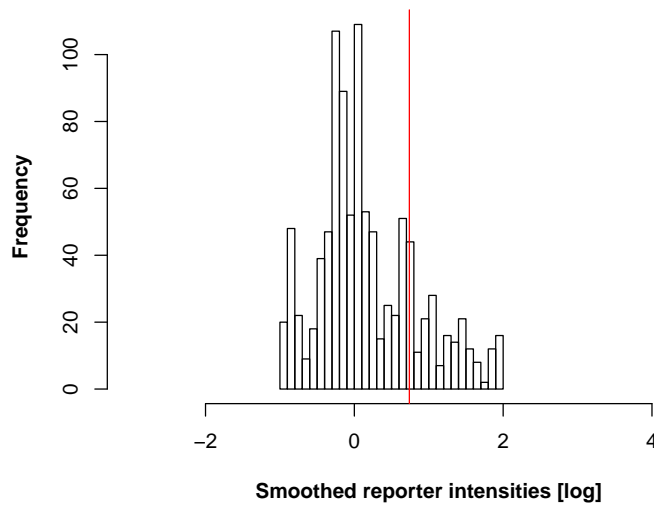


Figure 4: *Histograms of reporter intensities after smoothing of reporter level. The red vertical line is the cutoff values suggested by the histogram.*

Since antibodies vary in their efficiency to bind to their target epitope, we suggest to obtain a different threshold for each antibody. In the example data, however, we have only one antibody against Suz12.

While this threshold worked well for us, we do not claim this way to be a gold standard for determining the threshold. In particular, it does not take into account the auto-correlation between near-by reporters. See [Bourgon \(2006\)](#) for a more sophisticated algorithm that does take it into account.

```

> chersX <- findChersOnSmoothed(smoothX, probeAnno=exProbeAnno, thresholds=y0,
+   allChr="9", distCutOff=600, cellType="human")
> chersX <- relateChers(chersX, exGFF)
> chersXD <- as.data.frame.cherList(chersX)

> chersXD[order(chersXD$maxLevel, decreasing=TRUE),]

```

	name	chr	start	end	cellType
1	human.Suz12_vs_total smoothed.chr9.cher1	9	34319028	34319854	human
3	human.Suz12_vs_total smoothed.chr9.cher3	9	34580420	34582384	human
2	human.Suz12_vs_total smoothed.chr9.cher2	9	34579444	34579760	human

	antibody
1	Suz12_vs_total smoothed
3	Suz12_vs_total smoothed
2	Suz12_vs_total smoothed

	features
1	ENST00000379158 ENST00000379154 ENST00000379155 ENST00000346365 ENST00000337747
3	ENST00000378980 ENST00000351266
2	ENST00000378980 ENST00000351266

	maxLevel	score
1	1.9958907	52.1036588
3	1.5341497	47.8557696
2	0.7882005	0.5865187

Note that in *Ringo* functions, “ChIP-enriched region” is abbreviated to “cher”.

One characteristic of enriched regions that can be used for sorting them is the element `maxLevel`, that is the highest smoothed probe level in the enriched region. Alternatively, one can sort by the `score`, that is the sum of smoothed probe levels minus the threshold. It is a discretized version of to the area under the curve with the baseline being the threshold.

```

> plot(chersX[[1]], smoothX, probeAnno=exProbeAnno, gff=exGFF,
+   paletteName="Spectral")

```

Figure 5 displays an identified enriched region, which is located upstream of the *Nudt2* gene. This ChIP-enriched region was already obvious in plots of the normalized data (see Figure 3). While it is reassuring that our method recovers it as well, a number of other approaches would undoubtedly have reported it as well.

## 9 Agilent data

The package *Ringo* can also be applied to ChIP-chip data from manufacturers other than NimbleGen. As long as the data is supplied as an *RGList* or *ExpressionSet*, the functions of the package can be used, although certain function arguments may need to be changed from their default setting. As an example, we demonstrate how *Ringo* can be used for the analysis of ChIP-chip data generated on two-color microarrays from Agilent. These data have been described in Schmidt et al. (2008), and the raw data files were downloaded from

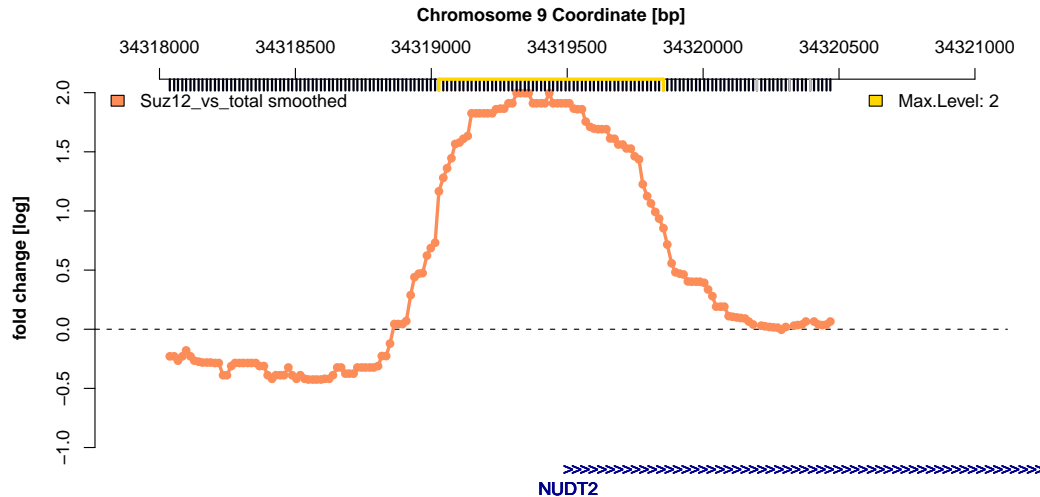


Figure 5: *One of the identified Suz12-antibody enriched regions on chromosome 9.*

the ArrayExpress database (Parkinson et al., 2009, accession: E-TABM-485). The data are ChIP-chip measurements of the histone modification H3K4me3 in a 300 kb region of chromosome 17 in mouse Tc1 liver cells. These demo data files included in this package are only excerpts of the original data files.

First we read in the raw data using the function `read.maimages` from package *limma*.

```
> agiDir <- system.file("agilentData", package="Ringo")
> arrayfiles <- list.files(path=agiDir,
+ pattern="H3K4Me3_Tc1Liver_sol1_mmChr17_part.txt")
> RG <- read.maimages(arrayfiles, source="agilent", path=agiDir)
```

Annotation of the one sample was provided and we created a targets file that contains this sample annotation.

```
> at <- readTargets(file.path(agiDir,"targets.txt"))
> RG$targets <- at
```

Have a look at the raw data structure in R.

```
> show(RG)
```

```
An object of class "RGList"
$G
[1] 134.16390 51.76190 49.59016 87.10769 136.00000
774 more rows ...

$Gb
[1] 48.0 49.0 49.0 49.0 49.5
774 more rows ...
```

```

$R
[1] 110.85250 68.84127 69.40984 92.67692 254.26670
774 more rows ...

$Rb
[1] 65.0 64.0 65.0 65.5 66.0
774 more rows ...

$targets
      SlideNumber      FileName      Species Tissue
1 H3K4me3Tc1Liver H3K4Me3_Tc1Liver_sol1_mmChr17_part.txt Mus musculus Liver
  Cy3      Cy5 Antibody
1 input H3K4me3  H3K4me3

$genes
  Row Col ProbeUID ControlType      ProbeName      GeneName
1   1   1         0           1 MmCGHBrightCorner MmCGHBrightCorner
2   1   2         1           1      DarkCorner      DarkCorner
3   1   3         1           1      DarkCorner      DarkCorner
4   1   4         3           0 A_68_P31052153 chr17:012323564-012323623
5   1  95        185           0 A_68_P31152765 chr17:033822110-033822154
      SystematicName
1      MmCGHBrightCorner
2      DarkCorner
3      DarkCorner
4 chr17:012323564-012323623
5 chr17:033822110-033822154
774 more rows ...

$source
[1] "agilent"

```

We can only perform limited quality assessment of these data, as the data only consist of one sample and the demo data files are only a short excerpt of the full raw data from that microarray. Have a look at the spatial distribution of the raw intensities on the microarray surface.

```

> par(mar=c(0.01,0.01,0.01,0.01), bg="black")
> image(RG, 1, channel="red", dim1="Col", dim2="Row",
+       mycols=c("sienna","darkred","orangered"))

```

See the result in Figure 6. Again, the sparseness of the image is due to the fact that the example data is only a short excerpt of the original raw data file from the microarray.

To create a *probeAnno* object for this array, there are two possibilities:

1. one option – in many cases the preferable one – is to remap all the probe sequences from the array description file to the current genome build



Figure 6: *Spatial distribution of raw reporter intensities of the Agilent microarray, laid out by the reporter position on the microarray surface.*

- often, as in this case, the systematic name Agilent gives to reporters on the array corresponds to the genomic coordinates these reporters were designed to match. Therefore, if one decides to accept the mapping provided by the manufacturer, these systematic names can be used to generate a *probeAnno* object.

Here, we show the second option and use the systematic names of the reporters, as provided in the raw data file.

```
> pA <- extractProbeAnno(RG, "agilent", genome="mouse",
+   microarray="Agilent Tiling Chr17")
```

**Genome annotation** The provided Agilent example data relate to chromosome 17 of the Mouse genome. We have used the package *biomaRt* to retrieve annotated genes on this chromosome from the Ensembl database<sup>4</sup>.

```
> load(file=file.path(agiDir, "mm9chr17.RData"))
```

**Data processing** We preprocess the data in the same way as the previous example data set.

```
> X <- preprocess(RG[RG$genes$ControlType==0,], method="nimblegen",
+   idColumn="ProbeName")
> sampleNames(X) <- X$SlideNumber
```

---

<sup>4</sup>See the script `retrieveGenomicFeatureAnnotation.R` in the package's `scripts` directory for details.

We visualize the data in the region around the start site of the gene *Rab11b* on chromosome 17. For setting the parameters of the sliding-window smoothing, we first investigate the spacing between adjacent reporter matches on the genome.

```
> probeDists <- diff(pA["17.start"])
> br <- c(0, 100, 200, 300, 500, 1000, 10000, max(probeDists))
> table(cut(probeDists, br))
```

(0,100]	(100,200]	(200,300]	(300,500]
0	338	221	104
(500,1e+03]	(1e+03,1e+04]	(1e+04,2.13e+07]	
71	39	2	

The majority of match positions are 100 – 300 bp apart.

```
> smoothX <- computeRunningMedians(X, modColumn="Antibody",
+                               winHalfSize=500, min.probes=3, probeAnno=pA)
> sampleNames(smoothX) <- paste(sampleNames(X),"smooth",sep=".")
```

We visualize the data before and after smoothing in the region around the start site of the gene *Rab11b* on chromosome 17.

```
> chipAlongChrom(X, probeAnno=pA, chr="17", coord=33887000+c(0, 13000),
+               gff=mm9chr17, maxInterDistance=450)
> chipAlongChrom(smoothX, probeAnno=pA, chr="17", add=TRUE,
+               coord=33887000+c(0, 13000), paletteName="Set1",
+               maxInterDistance=450)
```

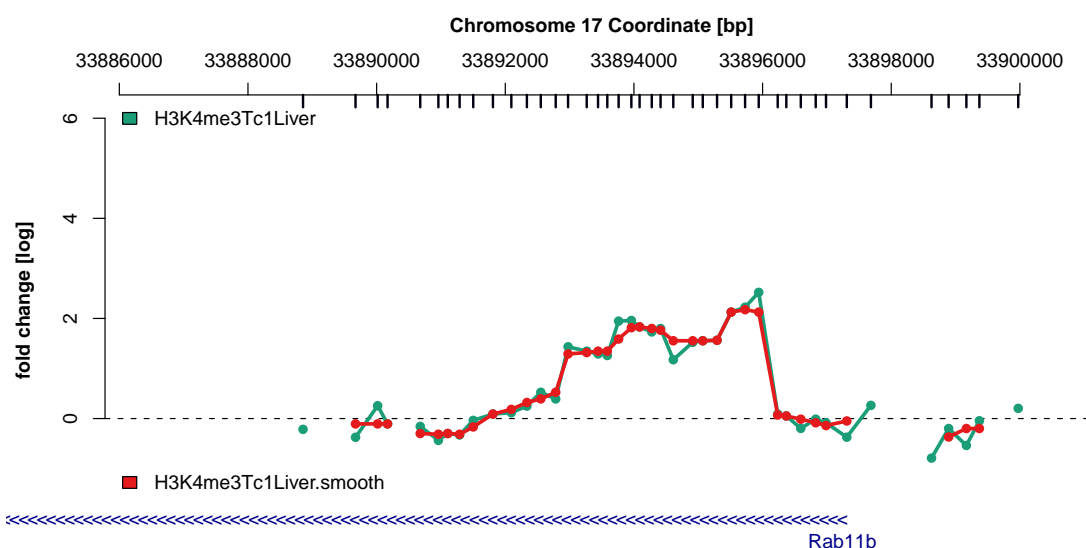


Figure 7: Normalized and smoothed Agilent reporter intensities around the TSS of the gene *Rap11b*.

See the result in Figure 7.



**Find ChIP-enriched regions** We compare two approaches to determine the threshold  $y_0$  above which smoothed reporter levels are considered to indicate enrichment. The first one is the non-parametric approach that we introduced before (see Section 8). The second one is similar. Only both the null distribution and the alternative distribution are assumed to be Gaussians. The threshold is minimal reporter levels with a sufficiently small  $p$ -value under the Gaussian null distribution.

```
> y0 <- upperBoundNull(exprs(smoothX))
> y0G <- twoGaussiansNull(exprs(smoothX))

> hist(exprs(smoothX), n=100, main=NA,
+       xlab="Smoothed expression level [log2]")
> abline(v=y0, col="red", lwd=2)
> abline(v=y0G, col="blue", lwd=2)
> legend(x="topright", lwd=2, col=c("red","blue"),
+       legend=c("Non-parametric symmetric Null", "Gaussian Null"))
```

Even though the non-parametric estimate is usually preferable, with few data points such as in this case, the estimate derived from a Gaussian null distribution might provide a better threshold for enrichment. We are going to use this threshold  $y_{0G}$  for the identification of ChIP-enriched regions.

```
> chersX <- findChersOnSmoothed(smoothX, probeAnno=pA, threshold=y0G,
+                               cellType="Tc1Liver")
> chersX <- relateChers(chersX, gff=mm9chr17, upstream=5000)
```

We find 14 ChIP-enriched regions.

```
> chersXD <- as.data.frame(chersX)
> head(chersXD[order(chersXD$maxLevel, decreasing=TRUE),])
```

		name	chr	start	end	cellType
6	Tc1Liver.H3K4me3Tc1Liver.smooth.chr17.cher6		17	33725511	33734380	Tc1Liver
4	Tc1Liver.H3K4me3Tc1Liver.smooth.chr17.cher4		17	33640444	33642033	Tc1Liver
5	Tc1Liver.H3K4me3Tc1Liver.smooth.chr17.cher5		17	33642962	33644147	Tc1Liver
10	Tc1Liver.H3K4me3Tc1Liver.smooth.chr17.cher10		17	33795820	33798894	Tc1Liver
2	Tc1Liver.H3K4me3Tc1Liver.smooth.chr17.cher2		17	33634150	33635943	Tc1Liver
12	Tc1Liver.H3K4me3Tc1Liver.smooth.chr17.cher12		17	33814429	33816303	Tc1Liver
	antibody	features	maxLevel	score		
6	H3K4me3Tc1Liver.smooth	ENSMUSG00000024300	5.511084	121.48346		
4	H3K4me3Tc1Liver.smooth		5.079047	23.08641		
5	H3K4me3Tc1Liver.smooth		5.008862	15.14508		
10	H3K4me3Tc1Liver.smooth	ENSMUSG00000059208	4.938792	43.52889		
2	H3K4me3Tc1Liver.smooth		4.930897	31.81080		
12	H3K4me3Tc1Liver.smooth	ENSMUSG00000059208	4.541763	17.97481		

This concludes the example of how *Ringo* can be used to analyze other types of ChIP-chip data.

## 10 Concluding Remarks

The package *Ringo* aims to facilitate the analysis of ChIP-chip readouts. We constructed it during the analysis of a ChIP-chip experiment for the genome-wide identification of modified histone sites on data gained from NimbleGen two-color microarrays. Analogous two-color microarray platforms, however, can also be processed. Key functionalities of *Ringo* are data read-in, quality assessment, preprocessing of the raw data, and visualization of the raw and preprocessed data. The package also contains algorithms for the detection of ChIP-enriched genomic regions. While one of these algorithms worked quite well with our data, we do not claim it to be the definite algorithm for that task.

**Further reading** For an extended tutorial about how to use *Ringo* for the analysis of ChIP-chip data, please refer to [Toedling and Huber \(2008\)](#) and the corresponding Bioconductor package *ccTutorial*.

**Package versions** This vignette was generated using the following package versions:

- R version 2.9.0 (2009-04-17), x86\_64-unknown-linux-gnu
- Locale: LC\_CTYPE=en\_US;LC\_NUMERIC=C;LC\_TIME=en\_US;LC\_COLLATE=en\_US;LC\_MONETARY=C;LC\_MESSAGES=C
- Base packages: base, datasets, graphics, grDevices, methods, stats, tools, utils
- Other packages: Biobase 2.4.0, lattice 0.17-22, limma 2.18.0, Matrix 0.999375-25, mclust 3.1-10.3, RColorBrewer 1.0-2, Ringo 1.8.0
- Loaded via a namespace (and not attached): annotate 1.22.0, AnnotationDbi 1.6.0, DBI 0.2-4, genefilter 1.24.0, grid 2.9.0, KernSmooth 2.22-22, RSQLite 0.7-1, splines 2.9.0, survival 2.35-4, xtable 1.5-5

## Acknowledgments

I thank Wolfgang Huber, Oleg Sklyar, Tammo Krüger, Richard Bourgon, and Matt Ritchie for source code contributions to and lots of helpful suggestions on *Ringo*, Todd Richmond and NimbleGen Systems, Inc. for providing us with the example ChIP-chip data.

This work was supported by the European Union (FP6 HeartRepair, LSHM-CT-2005-018630).

## References

- R. W. Bourgon. *Chromatin-immunoprecipitation and high-density tiling microarrays: a generative model, methods for analysis, and methodology assessment in the absence of a "gold standard"*. PhD thesis, University of California, Berkeley, Berkeley, California, USA, 2006. URL [http://www.ebi.ac.uk/~bourgon/papers/bourgon\\_dissertation\\_public.pdf](http://www.ebi.ac.uk/~bourgon/papers/bourgon_dissertation_public.pdf).
- R. C. Gentleman, V. J. Carey, D. J. Bates, B. M. Bolstad, M. Dettling, S. Dudoit, B. Ellis, L. Gautier, Y. Ge, J. Gentry, K. Hornik, T. Hothorn, W. Huber, S. Iacus, R. Irizarry, F. Leisch, C. Li, M. Maechler, A. J. Rossini, G. Sawitzki, C. Smith, G. K. Smyth, L. Tierney, Y. H. Yang, and J. Zhang. Bioconductor: Open software development for computational biology and bioinformatics. *Genome Biology*, 5:R80, 2004.

- W. Huber, A. von Heydebreck, H. Sültmann, A. Poustka, and M. Vingron. Variance stabilization applied to microarray data calibration and to the quantification of differential expression. *Bioinformatics*, 18:S96–S104, 2002.
- H. Pages, R. Gentleman, P. Aboyoun, and S. DebRoy. *Biostrings: String objects representing biological sequences, and matching algorithms*, 2008. R package version 2.9.29.
- H. Parkinson, M. Kapushesky, N. Kolesnikov, G. Rustici, M. Shojatalab, N. Abeygunawardena, H. Berube, M. Dylag, I. Emam, A. Farne, E. Holloway, M. Lukk, J. Malone, R. Mani, E. Pilicheva, T. F. Rayner, F. Rezwani, A. Sharma, E. Williams, X. Z. Bradley, T. Adamusiak, M. Brandizi, T. Burdett, R. Coulson, M. Krestyaninova, P. Kurnosov, E. Maguire, S. G. Neogi, P. Rocca-Serra, S.-A. Sansone, N. Sklyar, M. Zhao, U. Sarkans, and A. Brazma. ArrayExpress update—from an archive of functional genomics experiments to the atlas of gene expression. *Nucleic Acids Research*, 37(Database issue):D868–D872, Jan 2009. URL <http://www.ebi.ac.uk/arrayexpress>.
- D. Schmidt, R. Stark, M. D. Wilson, G. D. Brown, and D. T. Odom. Genome-scale validation of deep-sequencing libraries. *PLoS ONE*, 3(11):e3713, 2008.
- G. S. C. Slater and E. Birney. Automated generation of heuristics for biological sequence comparison. *BMC Bioinformatics*, 6:31, 2005.
- G. K. Smyth. Limma: linear models for microarray data. In R. Gentleman, V. Carey, W. Huber, R. Irizarry, and S. Dudoit, editors, *Bioinformatics and Computational Biology Solutions Using R and Bioconductor*, pages 397–420. Springer, 2005.
- S. L. Squazzo, H. O’Geen, V. M. Komashko, S. R. Krig, V. X. Jin, S. wook Jang, R. Margueron, D. Reinberg, R. Green, and P. J. Farnham. Suz12 binds to silenced regions of the genome in a cell-type-specific manner. *Genome Res*, 16(7):890–900, 2006.
- J. Toedling and W. Huber. Analyzing ChIP-chip Data Using Bioconductor. *PLoS Computational Biology*, 4(11):e1000227, Nov 2008.
- J. Toedling, O. Sklyar, T. Krueger, J. J. Fischer, S. Sperling, and W. Huber. Ringo - an R/Bioconductor package for analyzing ChIP-chip readouts. *BMC Bioinformatics*, 8:221, 2007.